



SEVIO

User Guide to Elco Elettronica



Legal Information

The content of this document is provided "as-is". No warranties of any kind related to the content of this document are provided. Sevio reserves the right to review this document or withdraw it at any time without any notice.

Under no circumstances shall Sevio be responsible for any loss of data or income or any special, incidental, and consequential or indirect damages howsoever caused.

More information about Sevio can be found at the following Internet address: <https://sevio.it/>.

Version History

Revision	Date	Description
16_09	01/09/2016	Emission
17_05	01/05/2017	First Revision
21_12	01/12/2021	Second Revision

Trademarks

Sevio is a Sevio S.r.l. trademark. TOP 7 is an Elco Elettronica registered trademark. Other product names and brands are registered brands or trademarks of their respective owners.



Table of contents

Legal Information.....	2
Version History.....	2
Trademarks.....	2
Preface.....	4
Requirements.....	4
Using Sevio System.....	5
Sevio and Elco Elettronica.....	6
Preliminary configuration.....	7
Remote access via VNC client.....	9



Preface

The Sevio system has been designed to offer Clients a solution for the connection of multiple independent and physically dislocated networks, transforming them into numerous Sevio networks. Each Client is the owner of a Realm which is the set of all Sevio networks and Workstations (PC, tablet, smartphone).

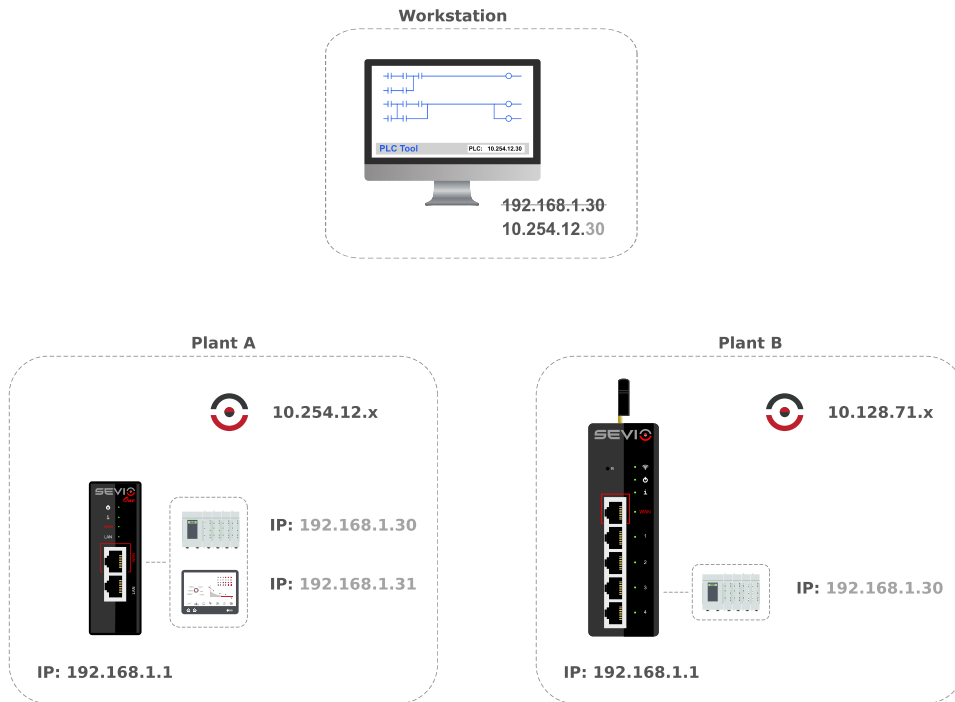
This document explains how to use the Sevio system combined with **Elco Elettronica** products.

Requirements

The fundamental requirements for use of the Sevio system combined with **Elco Elettronica** products:

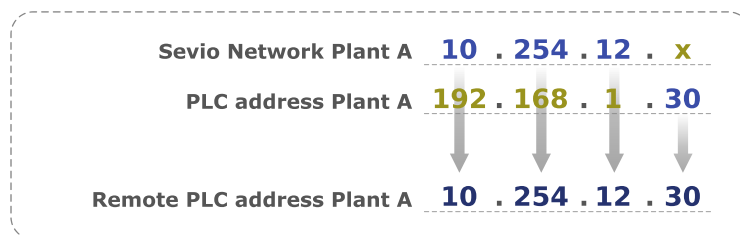
- the Sevio Router;
- the Registration Sheet (supplied along with the Sevio Router);
- an Elco TOP 7 with Ethernet connectivity;
- a PC with an up-to-date web browser and applications installed;
- a VPN Client configured and connected (see [Workstations Configuration](#));
- an Internet access.

Using Sevio System



Each Sevio Router provides a specific Sevio network. In the above example, Plant A Sevio network is 10.254.12.x, while the Plant B Sevio network is 10.128.71.x.

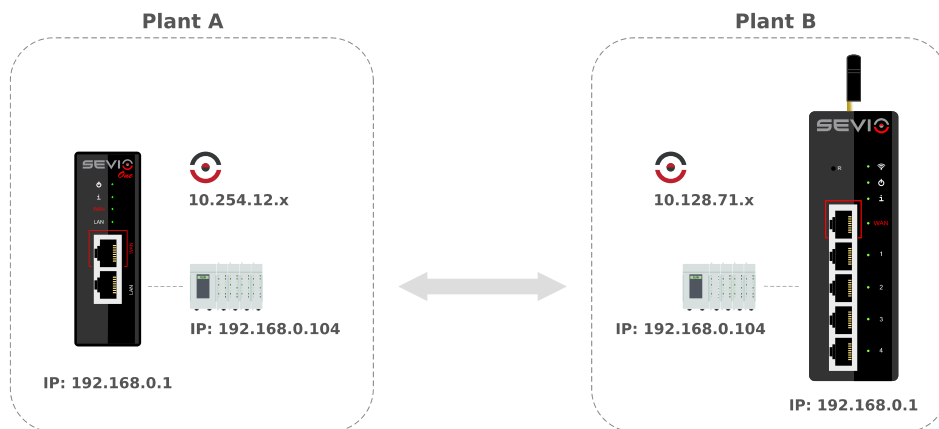
To access Plant A PLC from the Workstation, the Operator should combine first three bytes of Sevio Network with fourth byte assigned to PLC device:



Sevio and Elco Elettronica

The Sevio system allows Workstations to communicate with all devices connected to the various Sevio Routers.

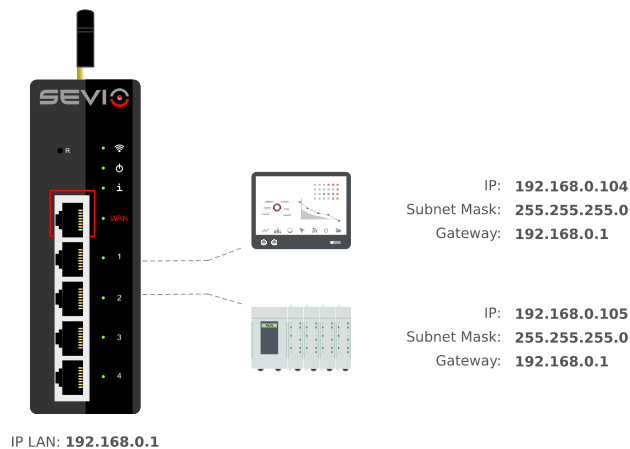
One of the most distinctive features of Sevio System is the routing capability, eg. allowing communication between devices of different Sevio networks/plants, part of the same Realm.



In order to being able to use this feature, it is necessary that all automation devices are configured with IP address and gateway address (LAN address of the Sevio Router to which they are connected). Firewalls on all Sevio Routers must be enabled.

Remote connection will be allowed using Sevio Networks on each site.

Note: Sevio Routers must have the same firmware installed.

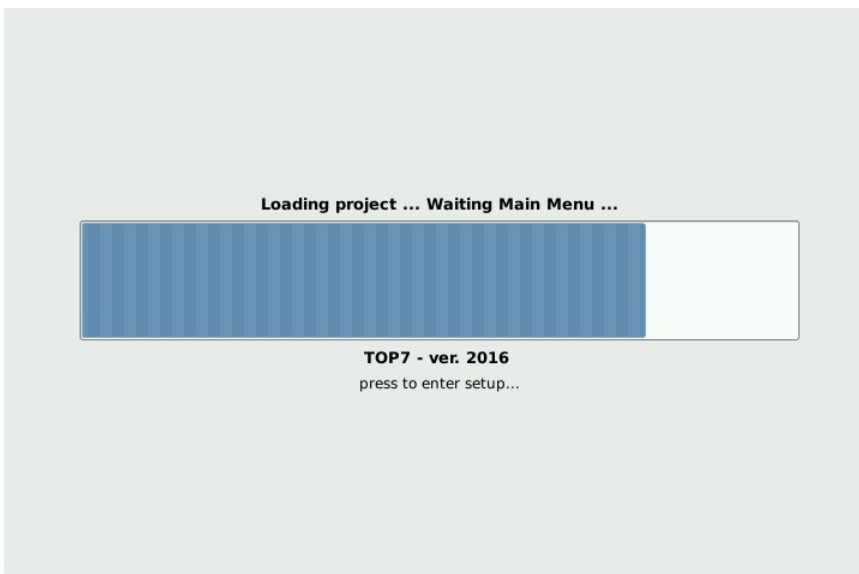


Preliminary configuration

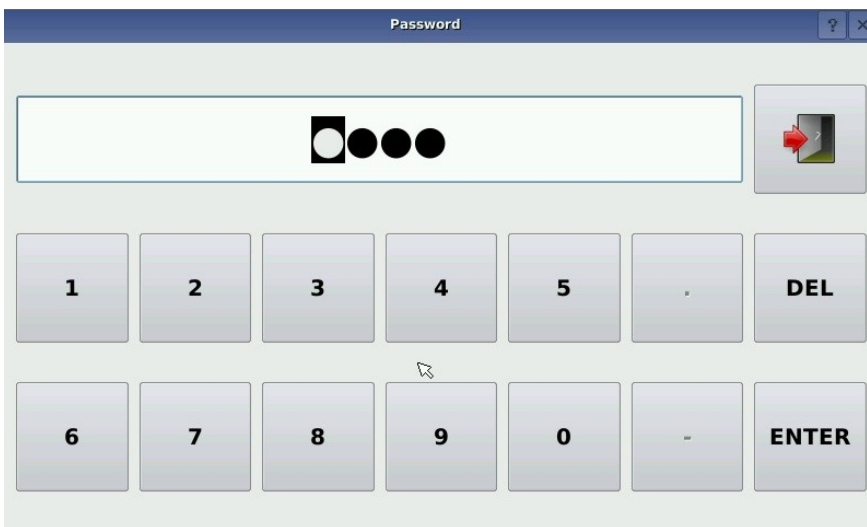
The procedure below describes the preliminary configuration of devices that need to be accessible remotely.

A Sevio Router is sometimes installed in existing systems by personnel that is not qualified to modify the software configuration. Using the Masquerade mode (see chapter Sevio Router Parameters in [Advanced User Guide](#)) it is possible to access devices remotely by omitting the configuration of the gateway parameters, with the procedure below.

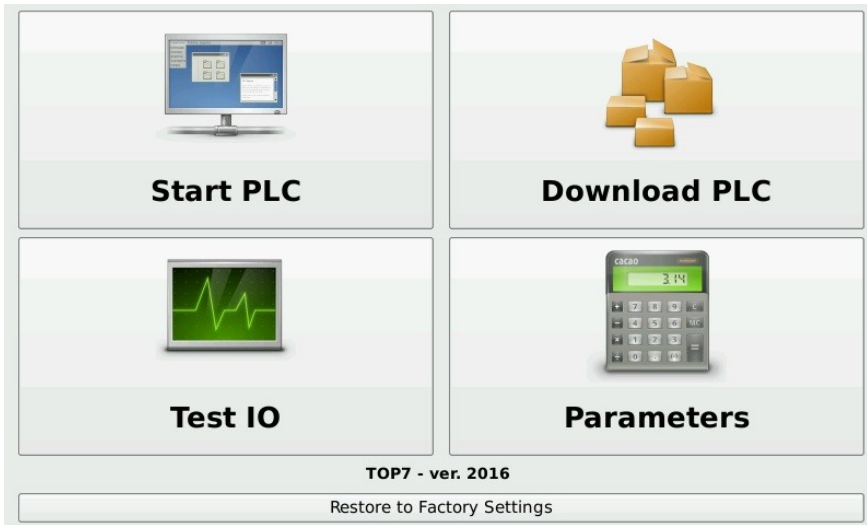
Note: that enabling masquerade mode prevents the TOP 7 device from originating connections to the Sevio Network.



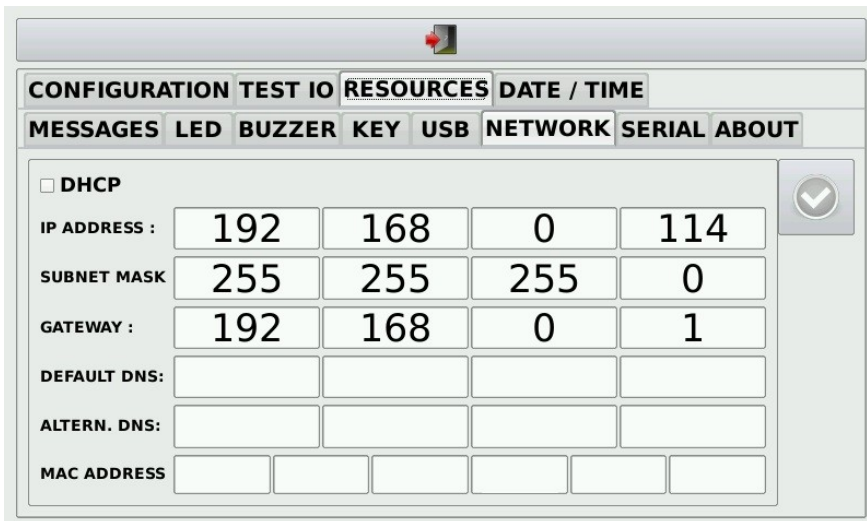
Loading **TOP 7** and log into network setup, press the progress bar.



Fill in the password and confirm with **ENTER**.

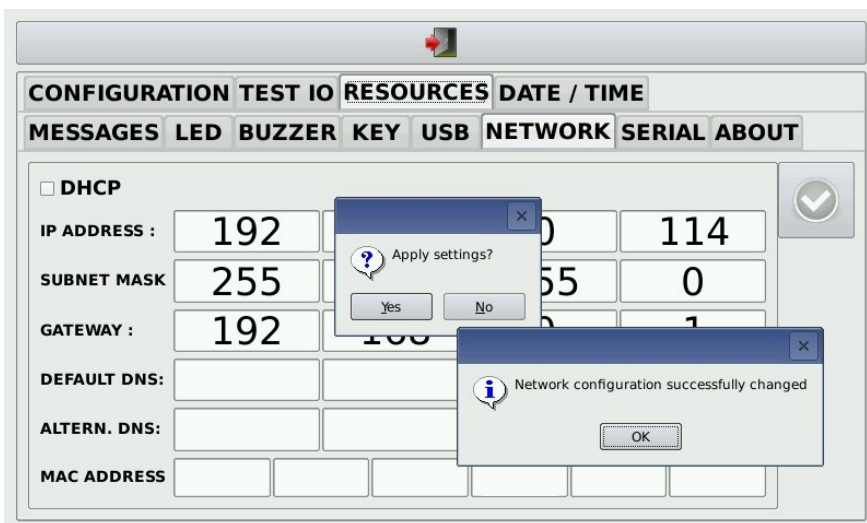


Select **Test IO**.



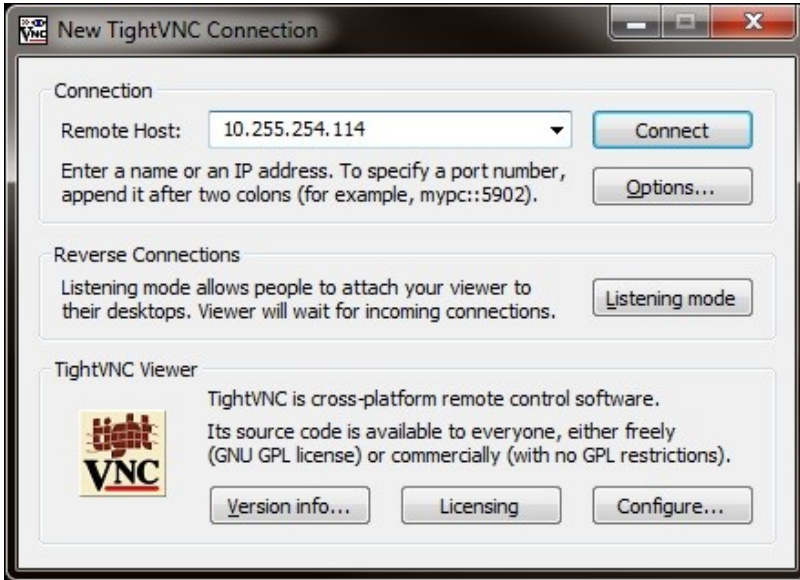
Select **Network** from **Resources** section.

Set up in **Gateway** field the Sevio Router LAN IP address assigned (see the chapter Sevio Router Parameters in [Advanced User Guide](#)) e.g. **192.168.0.1**.

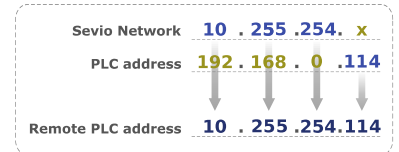


Yes to confirm.

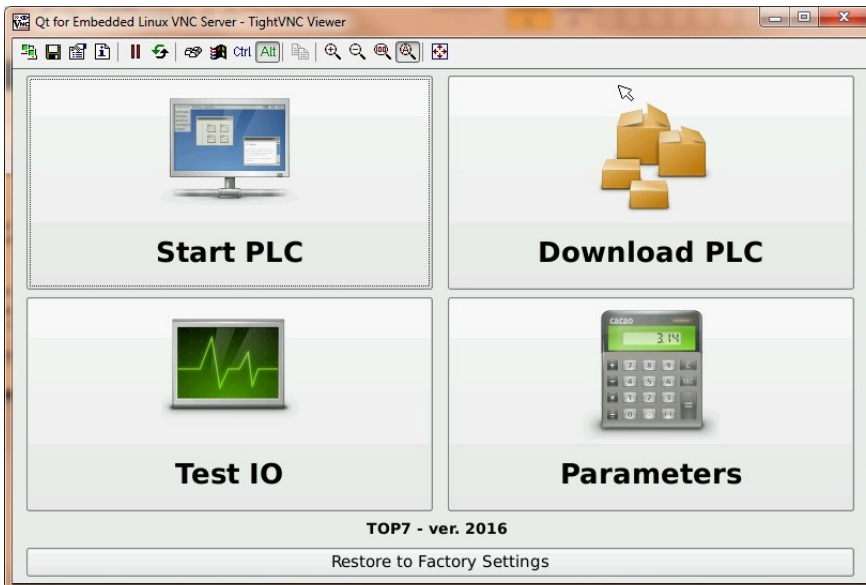
Remote access via VNC client



In the example, load **New TightVNC** and set up in **Remote Host** field the remote **TOP 7 IP** address:



Then **Connect**.



From this moment on it is possible to perform all online activities.



Sevio Srl - Via Dei Caniana, 6/A, Bergamo - IT

Ph. +39 0350514333

Customer service: support@sevio.it

Sales Department: sales@sevio.it

<https://sevio.it/>