



SEVIO

User Guide to Eaton



Legal Information

The content of this document is provided "as-is". No warranties of any kind related to the content of this document are provided. Sevio reserves the right to review this document or withdraw it at any time without any notice.

Under no circumstances shall Sevio be responsible for any loss of data or income or any special, incidental, and consequential or indirect damages howsoever caused.

More information about Sevio can be found at the following Internet address: <https://sevio.it/>.

Version History

Revision	Date	Description
16_09	01/09/2016	Emission
17_05	01/05/2017	First Revision
21_12	01/12/2021	Second Revision

Trademarks

Sevio is a Sevio S.r.l. trademark. Eaton is a registered brand. Other product names and brands are registered brands or trademarks of their respective owners.



Table of contents

Legal Information.....	2
Version History.....	2
Trademarks.....	2
Preface.....	4
Requirements.....	4
Using Sevio System.....	5
Sevio and Eaton.....	6
Preliminary configuration.....	7
Remote access – Codesys®3.....	8
Remote access – Galileo®10.....	9



Preface

The Sevio system has been designed to offer Clients a solution for the connection of multiple independent and physically dislocated networks, transforming them into numerous Sevio networks. Each Client is the owner of a Realm which is the set of all Sevio networks and Workstations (PC, tablet, smartphone).

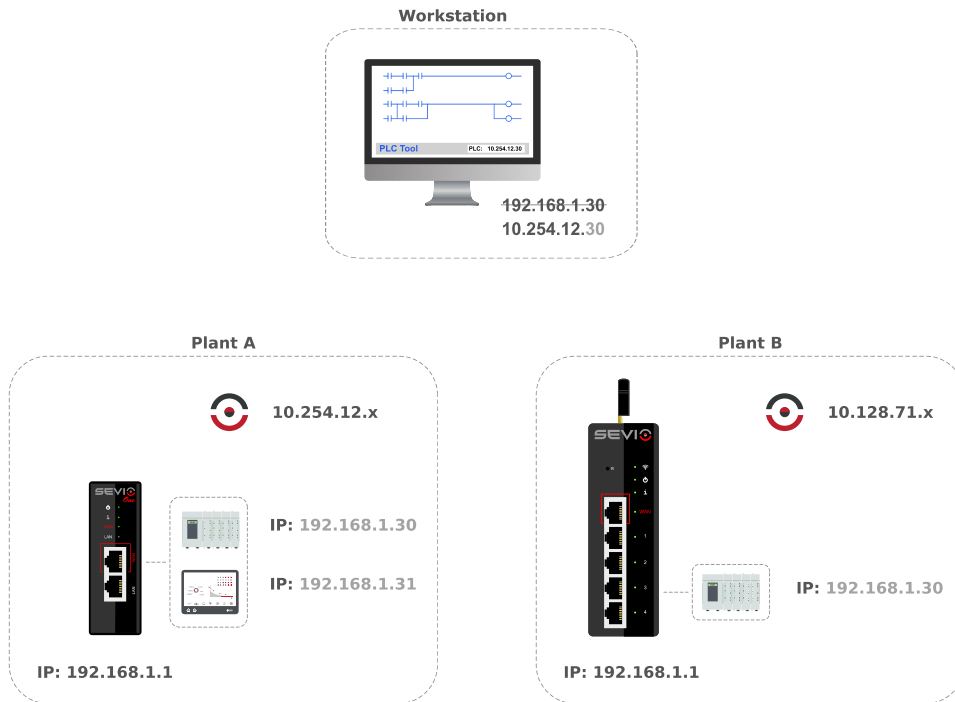
This document explains how to use the Sevio system combined with **Eaton** products.

Requirements

The fundamental requirements for use of the Sevio system combined with **Eaton** products:

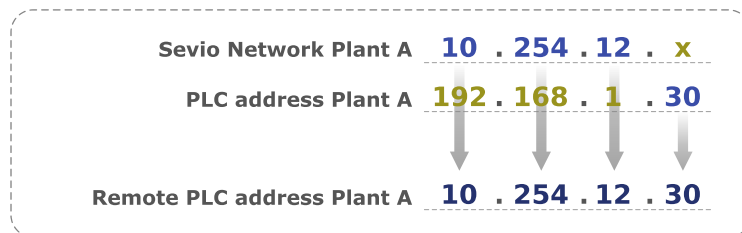
- the Sevio Router;
- the Registration Sheet (supplied along with the Sevio Router);
- a Eaton PLC/HMI with Ethernet connectivity;
- a PC with an up-to-date web browser and Eaton software installed;
- a VPN Client configured and connected (see [Workstations Configuration](#));
- an Internet access.

Using Sevio System



Each Sevio Router provides a specific Sevio network. In the above example, Plant A Sevio network is 10.254.12.x, while the Plant B Sevio network is 10.128.71.x.

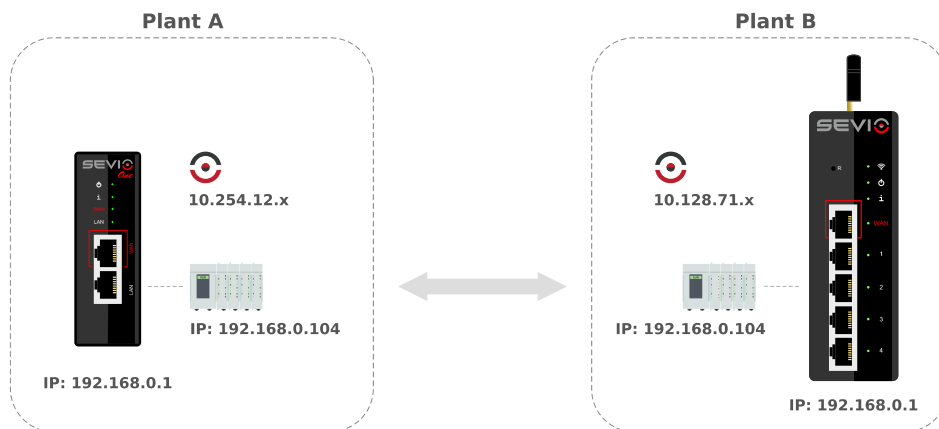
To access Plant A PLC from the Workstation, the Operator should combine first three bytes of Sevio Network with fourth byte assigned to PLC device:



Sevio and Eaton

The Sevio system allows Workstations to communicate with all devices connected to the various Sevio Routers.

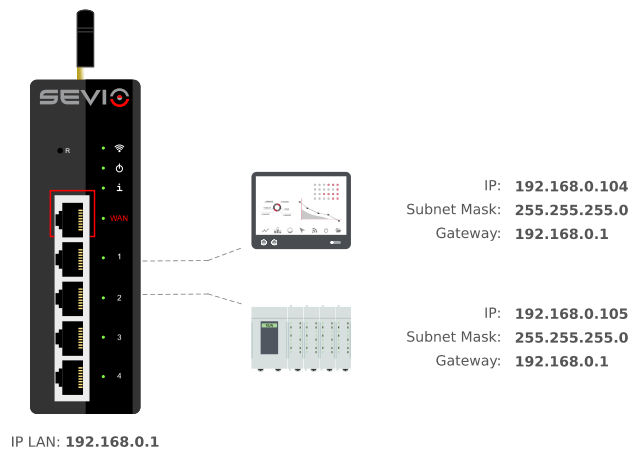
One of the most distinctive features of Sevio System is the routing capability, eg. allowing communication between devices of different Sevio networks/plants, part of the same Realm.



In order to be able to use this feature, it is necessary that all automation devices are configured with IP address and gateway address (LAN address of the Sevio Router to which they are connected). Firewalls on all Sevio Routers must be enabled.

Remote connection will be allowed using Sevio Networks on each site.

Note: Sevio Routers must have the same firmware installed.

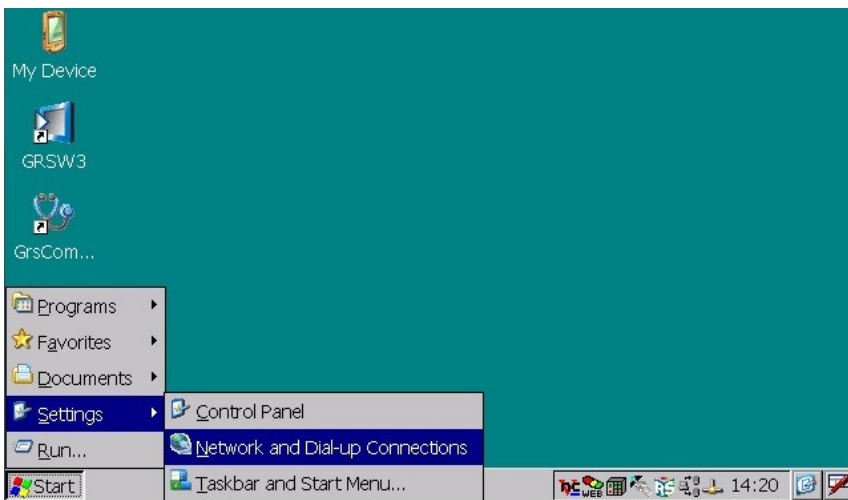


Preliminary configuration

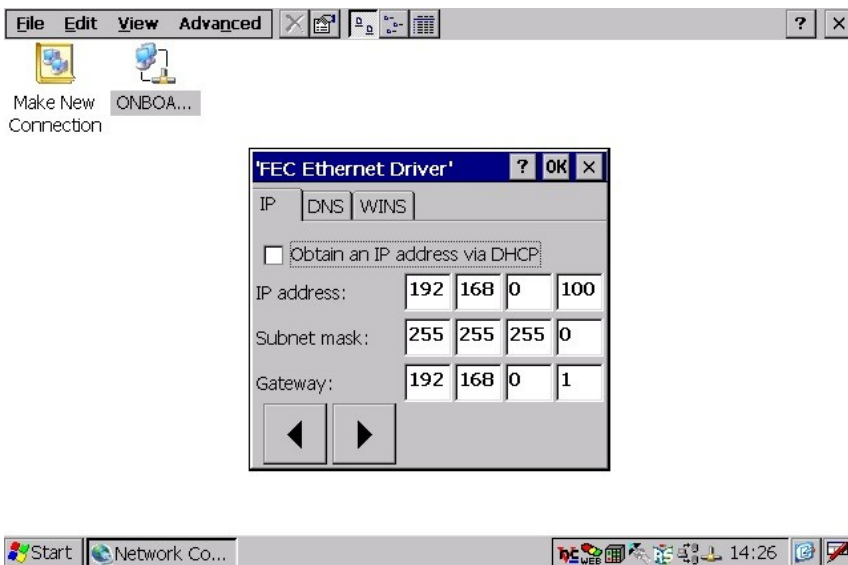
The procedure below describes the preliminary configuration of devices that need to be accessible remotely.

A Sevio Router is sometimes installed in existing systems by personnel that is not qualified to modify the software configuration. Using the Masquerade mode (see chapter Sevio Router Parameters in [User Guide](#)) it is possible to access devices remotely by omitting the configuration of the gateway parameters, with the procedure below.

Note: that enabling masquerade mode prevents the PLC device from originating connections to the Sevio Network.



On Windows CE OS, select **Start, Settings, Network and Dial-up connections.**

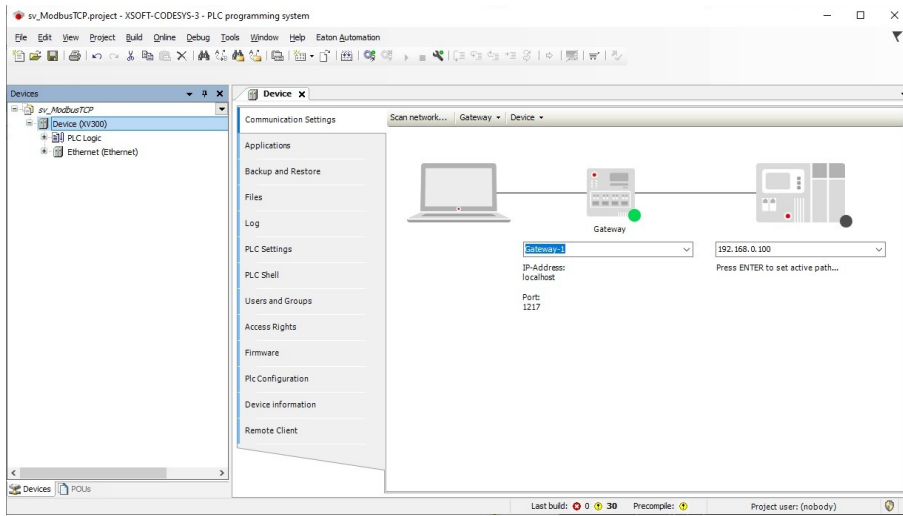


Identify the IP address, e.g. **192.168.0.100**.

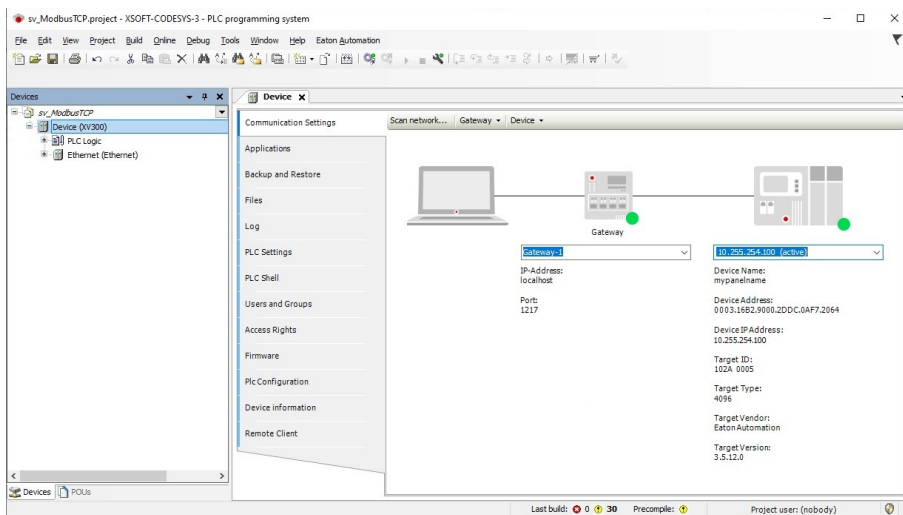
Set up as **Gateway** the Sevio Router LAN IP address assigned (see the chapter Sevio Router Parameters in [User Guide](#)), e.g. **192.168.0.1**.

Click **OK**.

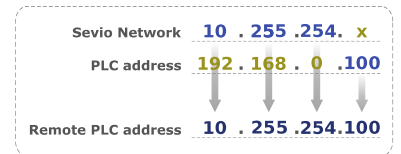
Remote access – Codesys[®]3



Add a New Connection.

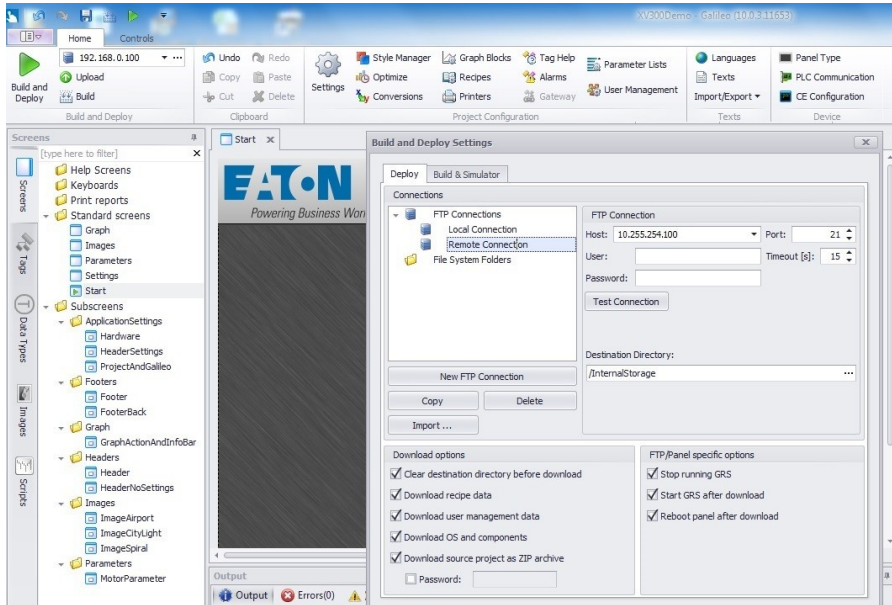


Set up the remote PLC IP address:



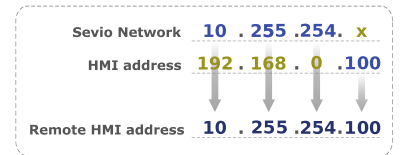
Proceed with online button.

Remote access – Galileo®10

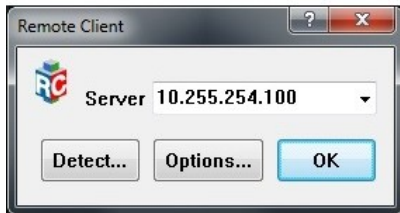


Go to **Build and Deploy**.

In the **Host** field set up the remote HMI IP address:



Proceed to the download, as a common local connection.



Setting in the **Server** field, the remote HMI IP address on **Remote Client**®, it is possible to manage it with the same local credential, e.g. real-time HMI status monitor.



Sevio Srl - Via Dei Caniana, 6/A, Bergamo - IT

Ph. +39 0350514333

Customer service: support@sevio.it

Sales Department: sales@sevio.it

<https://sevio.it/>

